



Medium Chess Puzzle # 0103

By

G Bud Games
<https://gbud.in>

January 12, 2022

Contents

Medium Chess puzzle # 0103 - Stop opponent's promotion	3
Medium chess puzzle 0103	3
Solution to medium chess puzzle 0103	4
Solution 1	4
Right moves for the solution to the medium chess puzzle 0103	7
Explanation for the moves	7
Categories of medium chess puzzle 0103	7
medium chess puzzle 0103 chart	8
How to view the solution to medium chess puzzle 0103	10
How to get help for moves in the medium chess puzzle 0103 . .	11
Play chess for free	12

List of Figures

1	Solve this medium chess puzzle 0103. Stop opponent's promotion @ https://gbud.in/gg2sf82	3
2	Solve this medium chess puzzle online with solution @ https://gbud.in/gg2sf82	3
3	Initial board position of medium chess puzzle 0103	4
4	Rd1	5
5	Bf5+	5
6	g6	6
7	Bxc2	6
8	medium chess puzzle 103 chart 1	8
9	medium chess puzzle 103 chart 2	9
10	medium chess puzzle 103 chart 3	9
11	medium chess puzzle 103 chart 4	10
12	Click the solution button to view solutions @ https://gbud.in/gg2sf82	10
13	Click the help button to get help on next move @ https://gbud.in/gg2sf82	11
14	Solve more medium puzzles @ https://gbud.in/chsmdpz	11
15	Solve other puzzles @ https://gbud.in/chsgppz	11
16	Play chess online for free. Solve puzzles and play with friends	12
17	Solve this puzzle online by scanning this QR code or go to the link below	13

Medium Chess puzzle # 0103 - Stop opponent's promotion

Solve this medium chess puzzle and improve your chess games through improvement of your chess strategies and chess tactics.

Puzzle No : 0103

Difficulty level : medium

Description : Stop opponent's promotion

Next Move : White

Player level : Intermediate

Short URL for puzzle : <https://gbud.in/gg2sf82>

Medium chess puzzle 0103

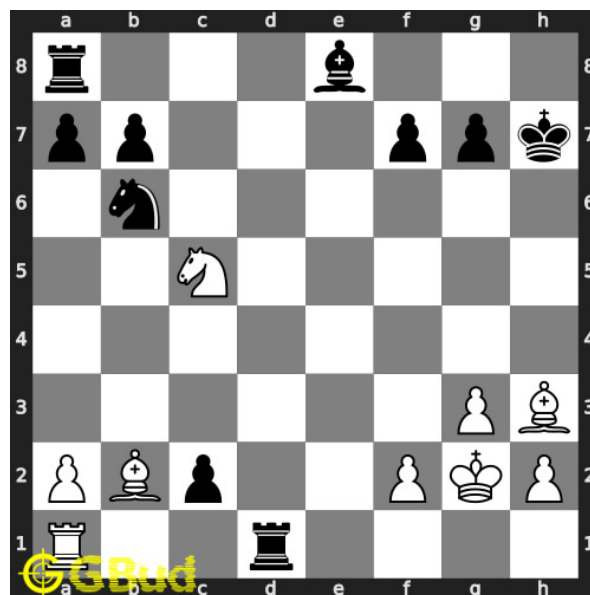


Figure 1: Solve this medium chess puzzle 0103. Stop opponent's promotion @ <https://gbud.in/gg2sf82>



Figure 2: Solve this medium chess puzzle online with solution @ <https://gbud.in/gg2sf82>

Dont forget to check out [chess puzzles](#), [easy chess puzzles](#), [medium chess puzzles](#), [hard chess puzzles](#) and [chess puzzles collections](#) .

Solution to medium chess puzzle 0103

At this puzzle, next [move](#) is by [White](#). The objective of the puzzle is to stop opponent's promotion.

See the interactive solution at the [puzzle page](#)

Solution 1

Initial board position This is the initial board position of medium chess puzzle 0103.

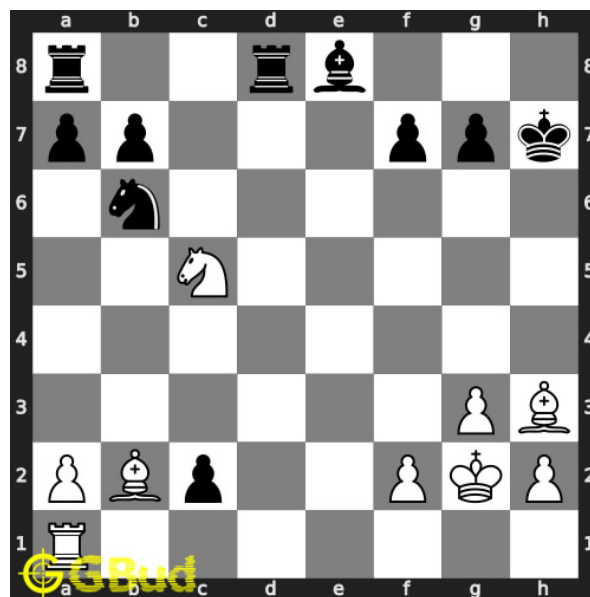


Figure 3: Initial board position of medium chess puzzle 0103

Move 1 Move by black

Move 3 Move by black

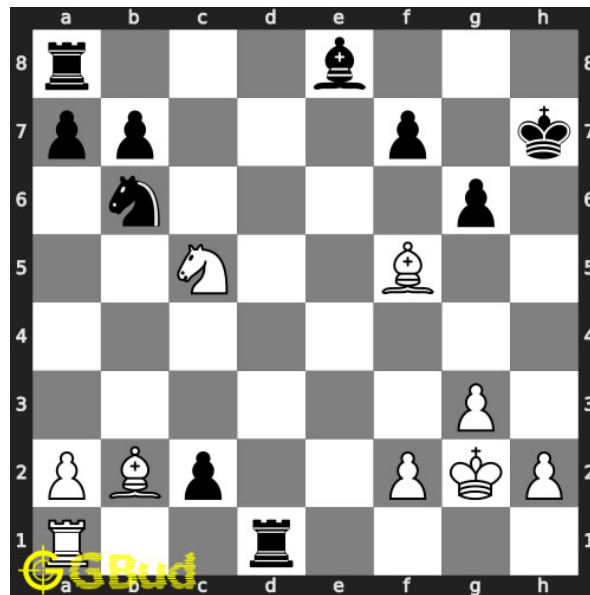


Figure 6: g6

opponent's [pawn moves](#) to g6 and blocks the [check](#) threat.

Move 4 Move by white

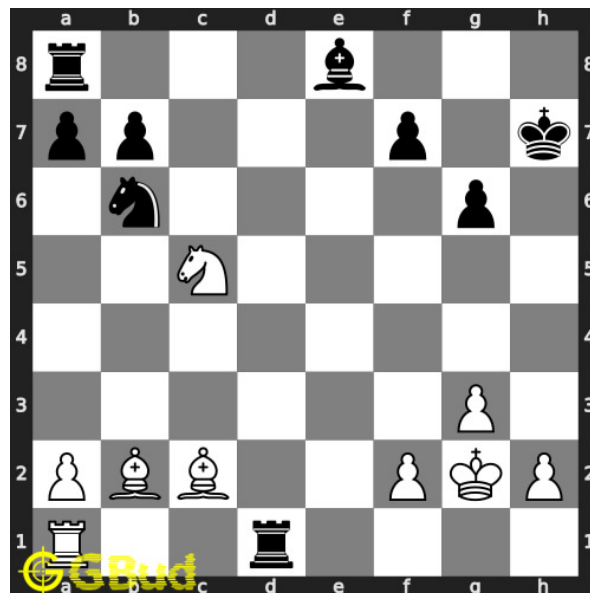


Figure 7: Bxc2

by capturing the [pawn](#), your [bishop](#) stopped the [promotion](#) of the [pawn](#) and removed the support to the [rook](#). this is how you can stop opponent's [promotion](#).

Right moves for the solution to the medium chess puzzle 0103

Based on the objective of the puzzle, you have to make the right moves. Following are the right moves

1. Bf5+, Bxc2

Explanation for the moves

1. Rd1 - Opponent sacrifice their rook for the promotion of the pawn. They force you to respond. If you capture the rook with your rook, they will promote their pawn by capturing your rook.
2. Bf5+ - Instead of responding to the pressure, your bishop moves and forks opponent's king and pawn
3. g6 - Opponent's pawn moves to g6 and blocks the check threat.
4. Bxc2 - By capturing the pawn, your bishop stopped the promotion of the pawn and removed the support to the rook. This is how you can stop opponent's promotion.
5. For right move - You stopped the promotion effectively by a bishop fork. Your attempt is good.
6. For wrong move - You could have had a bishop fork to remove the pawn. Do not stop trying

Categories of medium chess puzzle 0103

This medium chess puzzle falls in these categories.

1. [Medium chess puzzles](#)
2. [Sacrifice puzzles in chess](#)
3. [Gain puzzles in chess](#)
4. [Fork puzzles in chess](#)
5. [Strategy puzzles in chess](#)
6. [Bishop puzzles in chess](#)

medium chess puzzle 0103 chart



Figure 8: medium chess puzzle 103 chart 1



Figure 9: medium chess puzzle 103 chart 2



Figure 10: medium chess puzzle 103 chart 3



Figure 11: medium chess puzzle 103 chart 4

How to view the solution to medium chess puzzle 0103

To view the [solution to this puzzle](https://gbud.in/gg2sf82), follow the steps given below

1. Go to the [puzzle page](https://gbud.in/gg2sf82)
2. Click the solution button (Key as shown [below](https://gbud.in/gg2sf82)) to view the solution



Figure 12: Click the solution button to view solutions @ <https://gbud.in/gg2sf82>

How to get help for moves in the medium chess puzzle 0103

To get help or the possible next moves in the puzzle, , follow the steps given below

1. Go to the [puzzle page](#)
2. Click the help button (exclamation mark as shown [below](#)) to get help or suggestion on next possible [move](#)



Figure 13: Click the help button to get help on next move @ <https://gbud.in/gg2sf82>



Figure 14: [Solve more medium puzzles @ https://gbud.in/chsmdpz](https://gbud.in/chsmdpz)



Figure 15: [Solve other puzzles @ https://gbud.in/chsgppz](https://gbud.in/chsgppz)

Play chess for free

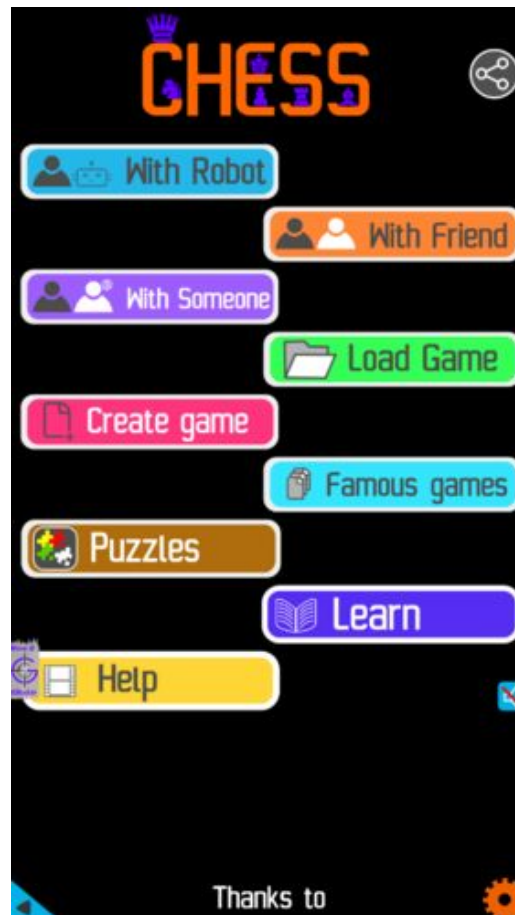


Figure 16: Play chess online for free. Solve puzzles and play with friends

Play chess for free at <https://gbud.in/chs>

We present you a platform to play chess online with friends for free. No need to install any app. You can play chess for free without registration or login.

Simple. You can do several chess related activities.

1. [solve chess puzzles](#)
2. [learn about chess](#)
3. [play chess with computer](#)
4. [play chess with friend](#)
5. [create your own chess games](#)

6. [fen viewer](#)
7. [fen editor](#)
8. [fen generator](#)
9. [pgn viewer](#)
10. [chess board editor](#)
11. [view famous chess games.](#)



Figure 17: Solve this puzzle online by scanning this QR code or go to the link below

<https://gbud.in/gg2sf82>

Read the latest article on Medium Chess puzzle # 0103 - Stop opponent's promotion by scanning this QR code or click the link

Previous article : « [Medium Chess puzzle # 0102 - Mate in 2 moves](#)

Next article : [Medium chess puzzles](#) »

[Back to top](#)

[Contact Us](#)